

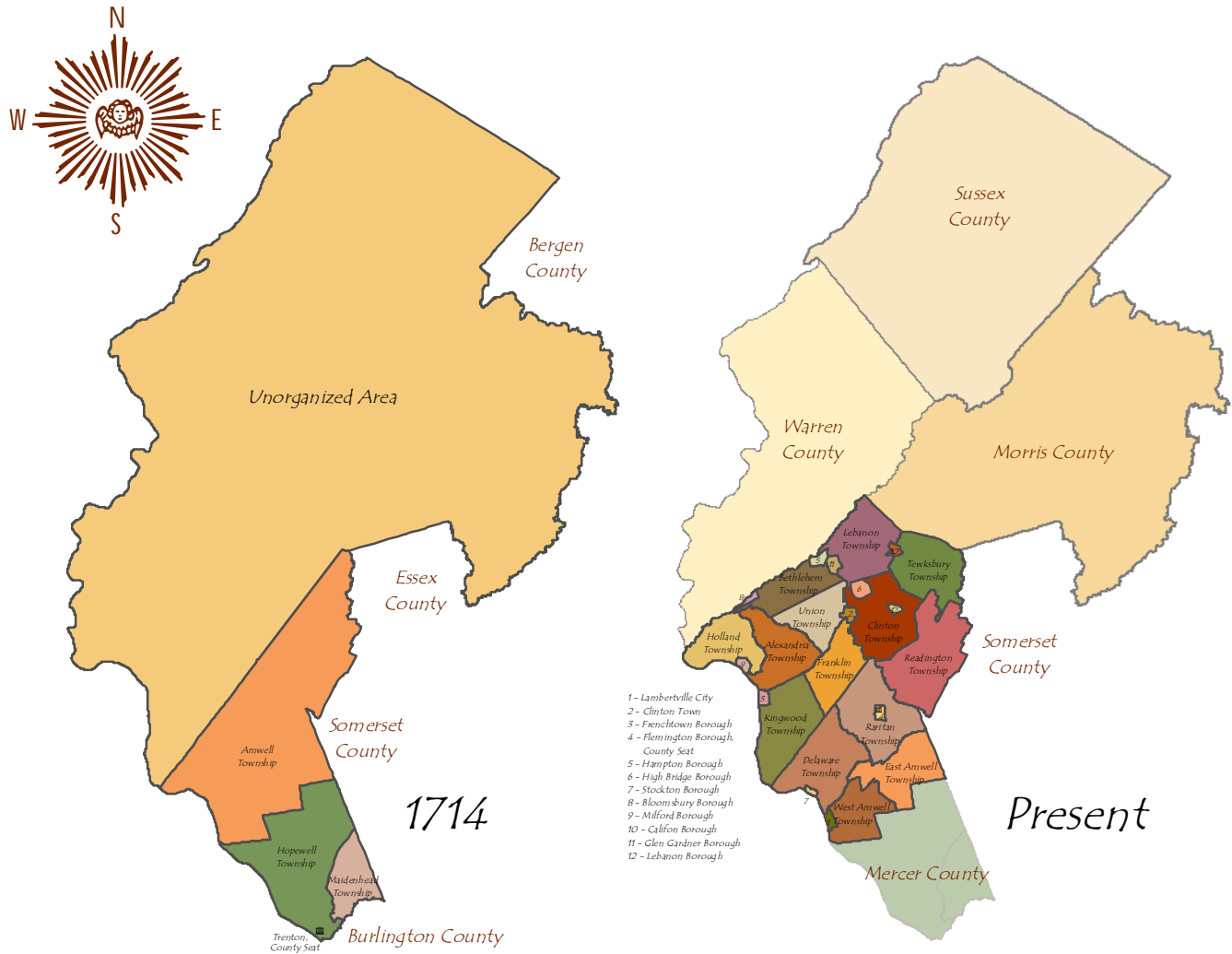


THE MUSEUMS OF HUNTERDON COUNTY, NEW JERSEY

Exploring Hunterdon County's Past and Present

Tour Dates: Sunday, July 19 and 26, 2015

Hunterdon County Then and Now

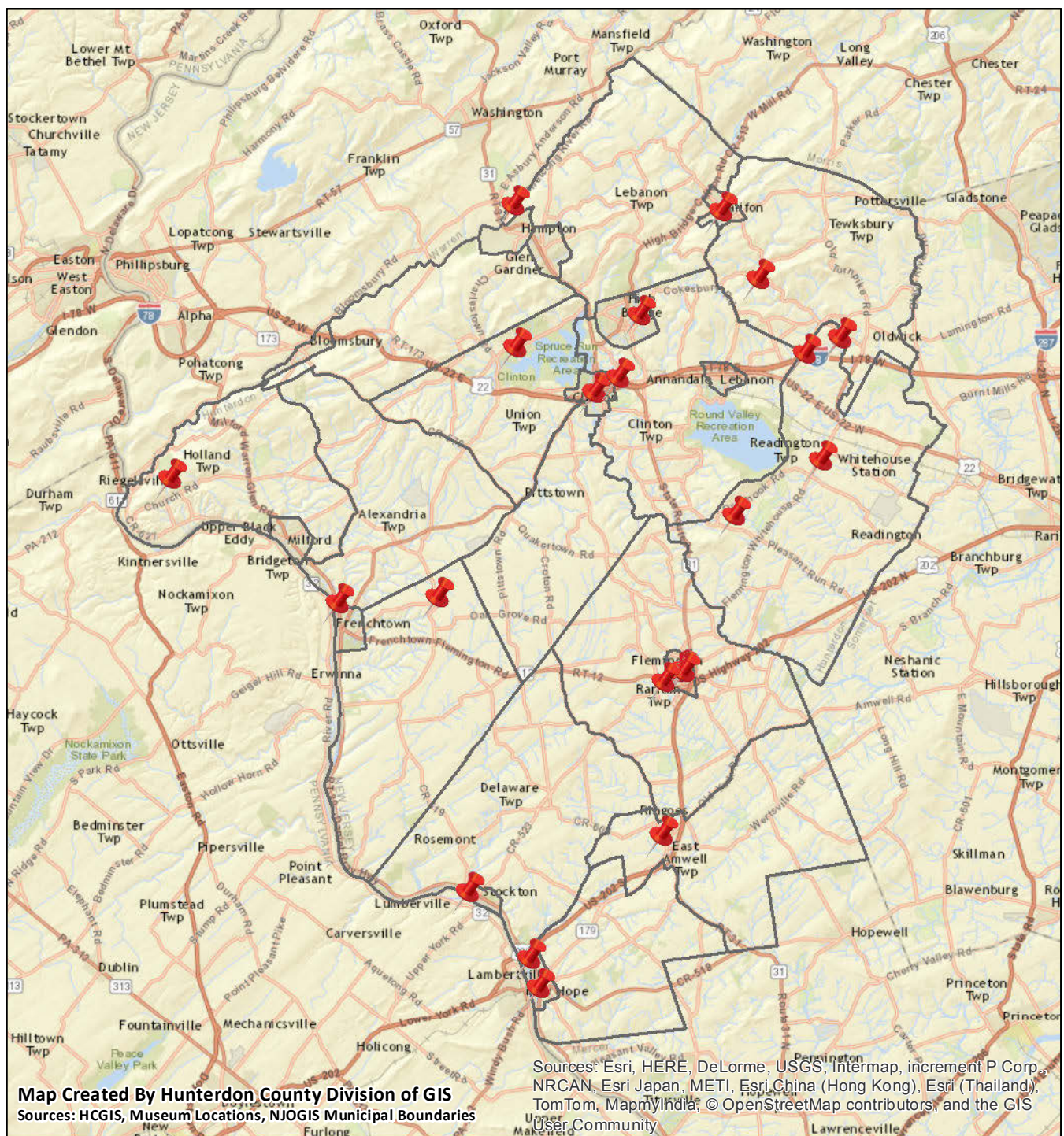


Please join us on a tour of the museums of Hunterdon County.
Our tour map starts in Flemington, the County seat,
but you are invited to start the tour at any convenient site.

This booklet is designed to be a keepsake and reference
to visit the museums at other times. Information and events
are on their websites and advertised locally.

**Cover Page: George Caleb Bingham (American, 1811-1879),
Washington Crossing the Delaware, 1856-71,
Chrysler Museum of Art, Norfolk, VA**

Visit Hunterdon County web site to see the geographic changes in the County:
hunterdon300th.org/HistoricBoundries/index.html



Circular Tour from Flemington, going South and returning North

Flemington, Doric House
 Flemington, Historic Courthouse
 Flemington, Choir School
 Flemington, Samuel Fleming House
 Raritan, Case-Dvoor Farm
 Ringoes, Black River & Western Railroad
 Stockton, Prallsville Mills
 Lambertville, Holcombe-Jimison Farmstead
 Lambertville, James Wilson Marshall House
 Kingwood, Oak Summit School
 Alexandria, The Prevost House
 Clinton, Hunterdon Art Museum

Clinton, Red Mill Museum Village
 Annandale, 1759 Vought House
 Lebanon Twp, Township of Lebanon Museum
 Union Twp, Union Forge Heritage Assn, Solitude Heritage Museum
 High Bridge, Solitude House
 Califon, The Station at Califon
 Tewksbury Twp, Tewksbury Historical Society
 Readington Twp, Taylor's Mill (McCrea Mill) Dwelling and Mill
 Readington Twp, Cold Brook School House
 Readington Twp, Eversole-Hall House
 Readington Twp, Bouman-Stickney Farmstead

Museums by Town

Alexandria, The Prevost House
Annandale, 1759 Vought House
Califon, The Station at Califon
Clinton, Hunterdon Art Museum
Clinton, Red Mill Museum Village
Flemington, Doric House
Flemington, Samuel Fleming House
Flemington, Choir School
Flemington, Historic Courthouse
High Bridge, Solitude House
Lebanon Township, Township of Lebanon Museum
Kingwood, Oak Summit School
Lambertville, James Wilson Marshall House
Lambertville, Holcombe-Jimison Farmstead
Raritan, Case-Dvoor Farm
Readington, Readington Township Museums
Ringoes, Black River & Western Railroad
Stockton, Prallsville Mills
Tewksbury, Tewksbury Historical Society
Union, Union Forge Heritage Assn, Solitude Heritage Museum

You are free to start your tour at any of the museums. Driving time to complete the museum's circular tour will take approximately three hours.

In planning your drive, note times for the two days of the museum tour: some open in morning and some will be open later in afternoon.

DORIC HOUSE MUSEUM
The Hunterdon County Historical Society
114 Main Street
Flemington



Photo by Marty Campanelli

The Doric House was built in the Greek Revival style in 1845 by Mahlon Fisher, a country carpenter of ability and taste, as his private residence. He also erected several other Flemington residences in the same style. The fine quality of design was probably Fisher's own, although it is likely that he had available to him Minard LeFevres' architectural plan book.

The Doric House was acquired by the Hunterdon County Historical Society in 1970 from the neighboring Methodist Church with the financial help of the leading citizens and business people of Hunterdon County. Earlier it had served as a residence, Odd Fellows headquarters, restaurant, and Methodist Church School. The Society restored it as a museum and research library.

One enters the house through a square columned portico. The foyer displays a beautiful elliptical staircase with elegant decorative touches. The front parlor is decorated with twelve tall, thin painted paneled pilasters capped by a gilded leaf-and-dart motif plaster molding and a tall and deeply recessed plaster cornice. A large cast plaster medallion centers the nine-foot high ceiling and supports an Argand style brass chandelier. The fireplace mantle is of black marble shot with gold. Doors on the first floor are massive in beautifully finished solid figured cherry more than two inches thick. The floors throughout the house are pine planks where not carpeted.

The museum house is largely furnished in the Empire style, a design developed in France under Napoleon (1804-1815) with curving lines, some carving and occasional ornamentation. The style, which complements Greek Revival architecture, spread to the United States in the 1820s-40s. Some of the furnishings were made in Hunterdon County.

Two-hour parking is usually available on the street in front of the building. If you plan more time in the Museum, use the back section of the free municipal lot across the street.

Regular Hours: Tours are given at 1pm and 2pm on the second and fourth Saturdays

Admission is free

www.hunterdonhistory.org

908.782.1091

HISTORIC LAW OFFICE AT HISTORIC COURTHOUSE

Main Street
Flemington



A largely unknown historical nugget can be viewed within the walls of the equally-historic Courthouse in Flemington, NJ. Officially dedicated in 2010, the recreation of an early twentieth-century lawyers' office was undertaken by the Hunterdon County Bar Association with the permission and cooperation of the Hunterdon County Freeholders.

With a multitude of donated artifacts from area attorneys, the office offers the visitor the opportunity to step back in time and experience what it would have been like to seek legal representation in the age of our grandparents and great-grandparents. From a unique rice paper copier to an odd-looking 'tool' that served as an early stapler, there are many interesting items, pictures and furniture pieces, all original to the era.

This historical gem is only open to the public during various public forums held at the historic Courthouse. There is an area attorney present to answer questions and explain a typical day in a 1920's law office.

There is no admission fee

**There is handicapped access through the rear door of Courthouse
(elevator service to second floor where Courtroom and Office are located)**

www.co.hunterdon.nj.us/facts/chpics.htm

FLEMINGTON CHILDREN'S CHOIR SCHOOL

**3 Chorister Place
Flemington**



The Choir School is the former museum of the musical history of Flemington's young people.

The Flemington Children's Choir School was a landmark for more than 100 years. In October 2009, the elderly Chorus of the Alumni of the Flemington Children's Choir School unanimously agreed to release the Freeholders from the restrictions placed on them in the deed dated January 1981 for the Choir School building. The 1890 Chickering piano, originally donated by Louella Alleger, was re-gifted to a local church and the major portion of the Choir School's historical collection was relocated to the Hunterdon County Historical Society. The final meeting of the Alumni was held in May 2010.

The School has served as the Headquarters for the Hunterdon 300 meetings.

SAMUEL FLEMING HOUSE MUSEUM & GARDENS

The Heart and Start of Flemington

5 Bonnell Street

Flemington



In 1756 Samuel Fleming purchased 210 acres of land from Thomas Penn, grandson of William Penn, in what was known as “The Amwells”. He built a house for his growing family which totaled ten children, five girls and five boys. The house was a frame structure with three floors, a grand structure for the time. The area soon became known as The Fleming Settlement, later Fleming’s Town, and finally Flemington.

The Fleming’s house was the most substantial dwelling for miles around. While the house does not meet the usual definition of a castle, the term “Fleming Castle” was possibly coined because it was the largest, finest home in the area at the time it was built. There is no documentation concerning the house’s nickname of “Fleming Castle” until the Daughters of the American Revolution, Colonel Thomas Lowrey Chapter, placed the stone entablatures in the wall in 1906.

Samuel Fleming lost his home through a sheriff’s sale due to his poor business dealings. The house had 7 subsequent owners: Doctor Case, Samuel L. Southard, The Bonnell Family, The Miller Family, Bertha Baker, The Daughters of the American Revolution, and the Borough of Flemington.

In 1927 the house, owned by the Miller family, had fallen into disrepair. The property was purchased by Mrs. Charles Foster, a member of the DAR. It was renovated and bequeathed to the DAR to be preserved and used as a museum. The Daughters of the American Revolution, Colonel Thomas Lowrey Chapter, held ownership of the house from 1927 until 2005.

In 2005 the Daughters of the American Revolution sold the house and property to the Borough of Flemington to be used as a public museum. Currently the museum is administrated by The Friends of Fleming Caste, Inc. Today, the Fleming’s house is set up to depict life in the 1700’s including a colonial kitchen, a parlor, and a room honoring the house’s residents through the years.

Regular Hours: Open House and Tours are held the second Saturday of every month.

Fleminghousemuseum.org

Phone: 908-782-4607

THE CASE-DVOOR FARM HOUSE

The Hunterdon Land Trust Headquarters
111 Mine Road
Raritan Township



The Case-Dvoor Farm House serves as the headquarters for the Hunterdon Land Trust, an organization dedicated to protecting the county's rural heritage by preserving and stewarding farms and fields, and by running a popular Farmers' Market.

The Case-Dvoor Farm House

Johan Philip Kaes (Case) became one of the Flemington area's earliest settlers when he immigrated to New Jersey in 1730. He purchased a 374-acre tract located just west of present-day Flemington seven years later from the sons of William Penn, and established his pioneer farmstead on the east side of Mine Brook.

According to local legend, Johan Philip built a log cabin with the help of the inhabitants of a nearby Native-American village. A deep friendship developed between Case and the village's chief, Tuccamirgan, whose childless wife loved to care for Case's children.

After Johan Philip died, his son Philip took over the property on the west side of the brook and built his substantial vernacular Georgian-style stone dwelling in 1798 (shown above). The house contains several original features including a large kitchen fireplace and built-in cupboards, wide-plank floors and doors. Two unique points of interest are the 18th-century graffiti in the attic, and the basement where a murder occurred in 1803.

The home passed through several hands until it was acquired by Jacob Dvoor in 1920 who established a livestock operation specializing in horses and dairy cows. In 1999, as part of a series of transactions designed to preserve the Dvoor farm as open space, Herbert Dvoor sold the tract to the South Branch Watershed Association, which in turn, conveyed farmstead and surrounding acreage to the Hunterdon Land Trust.

T Regular hours: open for special events and by appointment

There is no entrance fee

www.hunterdonlandtrust.org

908-237-4582

BLACK RIVER RAILROAD MUSEUM

**245 John Ringo Road (County Route 579)
Ringoes**



The museum is a great way to learn about the history of the Black River & Western Railroad and trains in Hunterdon County and the State of New Jersey!

Built in a retired Central Railroad of New Jersey baggage car, #420, the museum contains many artifacts from as far back as the 1860's. The museum is run by the Black River Railroad Historical Trust, a not for profit organization which operates the public passenger trains and special events on the Black River & Western Railroad.

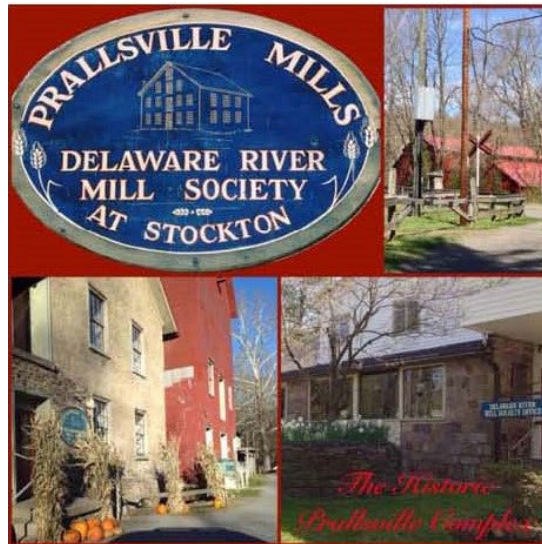
**Regular hours: whenever trains are scheduled to run.
No admission charge. Donations are accepted.**

www.flemingtontrain.org
info@flemingtontrain.org

908.782.6622

THE PRALLSVILLE MILLS COMPLEX

Eleven historic buildings including the Grist Mill, Sawmill, Linseed Mill,
John Prall Manor House, 1850's River House
33, 29 & 24 Risler Street
Stockton



The Prallsville Mills complex is a significant surviving representation of the 18th, 19th and early 20th century American village industrial complex. It provides insight into the close interdependence of the development of farming and industrial manufacturing operations with improvements of transportation options spanning our nation's history using the river, canal, roads and railways. The Prallsville Mills has been listed on the New Jersey State Register of Historic Places since 1976 and the National Register of Historic Places since 1979. The Prallsville Mills complex is located within the Delaware and Raritan Canal State Park in Stockton, NJ.

At one time, the Delaware River region was dotted with mills of every size and variety. Our nation's economic growth was strong because of the variety of industries these mills provided. It was a time when the prevalent technology meant that if you had water, you had a source of power. The very nature of this form of technology also carried its own risks; as all those mills were located in flood plains. It is not surprising, then, that not many of these grand mills that helped build the economic strength of the area still exist.

Today the Prallsville Mills is a resource for a wide variety of cultural, arts and community activities while also providing docent tours of the Mill Complex. The Prallsville Mills site is a perfect example of how our historic sites can remain an active asset to the community today while preserving and explaining our country's story of economic growth in relation to our natural resources, transportation development and technology.

Regular docent tours: Monday-Thursday from 1-4 pm mid-June to mid-September

Or by appointment, Group tours available

There is no entrance fee – suggested donation of \$3 per person

www.drms-stockton.org

drms@netcarrier.com

609-397-3586

HOLCOMBE-JIMISON FARM MUSEUM

1605 Daniel Bray Highway (Route 29)
Lambertville



HISTORY

Holcombe-Jimison House, under restoration, circa 1711, is thought to be the oldest standing recorded home in Hunterdon County, New Jersey. Over the years, the Holcombe-Jimison 1711 House, along with its lands, survived a series of insults and losses. The digging of the Delaware and Raritan feeder canal (1830-34), laying the railroad tracks in the mid-nineteenth century, and the addition of pipelines and power lines in the twentieth century, have carved the original 300 acres down to 12. The 1711 house narrowly escaped demolition again in 1980, when planned access roads for the new Route 202 toll bridge were scrapped.

After being part of the lands of William Penn, George Hutchinson and John Calowe, property records show that John Wey purchased 300 acres, including this site in 1704. It is not known if any structures were present at that point. The original, stucco-covered stone section of the house has a date stone marked 1711. It is possible it could be even older.

John Holcombe, purchased what was then a plantation in 1733. It stayed in the Holcombe family until 1858 when it was sold to settle an inheritance dispute, to John Barber.

The Barbers farmed it from 1865 until Milo and Rachel Jimison bought it in 1950. In 1968 they deeded 20 acres to the Hunterdon Historical Society with life rights. The Society then deeded it to the newly-formed, non-profit Holcombe-Jimison Farmstead Corporation in 1984. Who continue to operate the museum and are currently restoring the 1711 house.

TOUR OF THE 1711 HOUSE

Enter the door on the right and proceed into the kitchen and then into the center room. Take a look at the "original" fireplace (discovered behind a wall) which has been restored. The original chimney from 1700 is still intact. The Hunterdon County Cultural and Heritage Commission provided a grant to aid in the restoration of the ceiling beams and kitchen floor. When replacing the kitchen floor, a cistern was discovered that was dated 1899. It can be seen through a Plexiglas cover installed during the renovations. The restoration is a lengthy and expensive proposition.

THE FARMSTEAD

This facility includes the large 1891 bank barn that houses an extensive collection of area artifacts dealing with life and farming in the region. There are also two large barns displaying farm equipment, a general store, a post office, a blacksmith's forge, a 20th century belt driven machine shop, and a print shop.

Regular hours: Sundays 1pm to 4pm during May through October

**Also open all Wednesdays from 9am to noon for volunteers/
guests Donations for Adults are \$5.00, children under 5 are free**

Holcombe-Jimison.org

609-397-2752

Some Buildings are ADA accessible

THE JAMES WILSON MARSHALL HOUSE

60 Bridge Street
Lambertville



The Marshall House, on the National and New Jersey Registers of Historic Places, was the boyhood home of James Wilson Marshall, discoverer of gold in California in 1848, and is now the headquarters of the Lambertville Historical Society. The Federal brick structure was built in 1816 by his father, Philip Marshall, cabinet, coach and wagon maker, a member of one of the oldest families in New Jersey and by marriage to John Hart, a signer of the Declaration of Independence.

Constructed of bricks made of clay dug and fired near town, it retains many outstanding, original architectural features; in particular, the decorative Adams-style frieze under the eaves, the pegged front door; also the chimney cupboards in the parlor, windows, interior doors, hardware and staircase.

The house originally sat on "44 perches of land" (about 5 acres), and included a brick kitchen, two-story back addition with first and second floor porches, a wheelwright and wagon shop, barn and smokehouse. The family sold the property at Philip's death in 1834 and in 1882 Hugh Ely sold the property to St. John's Roman Catholic Church for a convent. Along with two attached buildings to the east, it was the sisters' home for 84 years.

In 1964, Mrs. Alice Narducci enlisted the help of local residents and persuaded the church to deed the Marshall House to the N.J. Dept. of Conservation & Economic Development for preservation purposes in 1968 rather than tear it down. The State leased the Marshall House, unrestored, to the newly born Lambertville Historical Society. The Society's lease stipulates that they maintain ... "the Parlor, Hallways and one bedroom...and that they perpetuate and develop exhibits containing artifacts of interest to the time and locale of James Wilson Marshall and the history of the City of Lambertville."

The parlor and one bedroom have been furnished with pieces that come as close as possible to the inventory recorded at the Hunterdon County courthouse at Philip Marshall's death. The Society's archives include thousands of items, including a collection of quilts. Recent exhibits include a pictorial history, called "Gil's Journey", tracing the still-viable shad fishing industry on Holcombe Island; an 1843 friendship quilt stamped with the names of 27 founding families; memorabilia from Lambertville's industrial days and more.

Regular hours: Weekends, 1-4pm, April through November and by appointment throughout the year

Guided walking tours of town: 1st Sunday each month April through October or by appointment

LambertvilleHistoricalSociety.org

609-397-0770

OAK SUMMIT SCHOOL
Corner of Oak Summit Road and 519
Kingwood Township



The Oak Summit one-room Schoolhouse was built about 1869 on land donated by the Hoff family. The structure is about 30 feet by 40 feet and could house up to 40 students. The structure that stands today replaced the original schoolhouse that was built in 1849. In 1953, the school was abandoned when Kingwood Township consolidated its one-room schoolhouses. Oak Summit School was in use for over 100 years.

The Oak Summit School Historical Society took possession of the school in 1979. In addition to restoring the structure which was in great disrepair, the Society furnished it with school desks of the era.

The Society is a non-profit organization dedicated to the preservation of the one-room schoolhouse. Their purpose is to promote the heritage of the forefathers of the area by making available to the public the schoolhouse museum and outbuildings with its authentic furnishings and its history. It offers young and old alike the insight of how students of past generations were educated, and provides the experience of a day of learning in a one-room schoolhouse filled with nostalgia.

The Oak Summit School is available to the general public for tours, meetings and educational purposes, often at no charge.

**Regular Hours: To schedule a tour or hold your event at this historic site,
please call Cynthia Niciecki at 908 996 4695 or Michele Lelo at 908 995 4968**

THE MUSEUM OF LOCAL HISTORY

The Prevost House

1100 Milford-Frenchtown Road
Alexandria Township



The Museum is run as a partnership between the Historical Societies of Alexandria Township and Milford Borough, and in conjunction with Holland Township Historic Preservation Commission and Frenchtown Borough. Artifacts, furniture and photographs from the four river communities are on display.

The Prevost Parcel

In 1825, a thirty-nine acre parcel was deeded to brothers Andrew and Louis Prevost. This was a fraction of the 900 acres in Frenchtown and surrounding Alexandria Township owned by their father, Swiss-born Paul Henri Mallet-Prevost who purchased the land from Thomas Lowery.

This house, constructed in two sections at different times, now stands on a small portion of that property. The front section is Late Federal/Early Greek Revival in style and has not been significantly altered since it was built in 1840. The existing kitchen was built at some later date.

The 39 acre property was then sold to John Rodenbough. In 1900, Elijah R. Case purchased the property from John Apgar, grandson of John Rodenbough. Case's daughter, Addie Besson inherited the house in 1934 and her daughter, Roberta Grauert become heir to the property in 1968. The original parcel was reduced to 6.88 acres and sold to the Kents in 1984, who later sold it to the American Water Company., They in turn donated it to Alexandria Township. The Township has given the home's stewardship to the Alexandria Township Historical Society. The Historical Society also maintains the township owned **Mt. Salem Church on CR 579.**

Regular hours: open for special events and by appointment
There is no entrance fee

Alexandria: alexandria-nj.us/other-links/alexandria-historical-society

Milford: milfordnjhistory.org, 908-995-4323 (Borough Hall)

Holland: hollandtownship.org, 908-995-4847 (Township Hall)

Frenchtown: frenchtownboro.com

THE HUNTERDON ART MUSEUM

7 Lower Center Street
Clinton



The Hunterdon Art Museum is a center for contemporary art, craft and design featuring about 15 exhibitions, and more than 200 classes and workshops annually.

The Hunterdon Art Museum

The stone mill, which sits on the south branch of the Raritan River, was rebuilt on the site of an original mill that was constructed in 1763. One popular story says this flour mill ground wheat for General George Washington's revolutionary army during its encampment in Morristown. From 1810 to 1828 Ralph Hunt owned this mill and the Red Mill across the river. The town became known as Hunt's Mills until it's name was changed to Clinton in 1828.

The mill was destroyed in a fire around 1834, and a stone mill was constructed on this site two years later by Nehemiah Dunham. After Dunham, Samuel Parry operated the stone building as a flour mill for about 50 years. The building is listed on the National Register of Historic Places as Dunham-Parry's Mill.

In 1952, it was put up for sale by the owner and miller, Joseph Kreidel. The idea for the museum, as well as much of the building's \$10,000 purchase price, came from James R. Marsh of Pittstown, who wrote a prospectus for the museum. In March 1953, the mill was dismantled and work began to convert the building into a museum.

Since that time, the Museum has served as a landmark regional art center showing work by established and emerging artists. It also offers a dynamic schedule of art classes for children and adults. Studio classes, workshops, gallery talks and docent-led tours are just some of the education programs offered at the Museum. In 2012, the Hunterdon Art Museum celebrated its 60th anniversary. Additionally, the Museum's terrace offers one of the most stunning views in New Jersey.

Current exhibitions at the Museum are: *Darren McManus – Tangents; Swept Away: Translucence, Transparency, Transcendence in Contemporary Encaustic; Sky Pape: Traces of Places; and Artists Founders of HAM.*

Regular hours: 11am to 5 pm, Tuesday through Sunday

The building is ADA accessible

www.hunterdonartmuseum.org

908-735-8415

RED MILL MUSEUM VILLAGE

56 Main Street
Clinton



Step inside the iconic Red Mill to learn about the industrial and agricultural history of Clinton and Hunterdon County. Exhibits and artifacts on display throughout the Mill help tell the story of this c. 1810 mill, its owners and the products made in the mill into the early 20th century. Built as a woolen mill and converted later into a grist mill, it eventually produced graphite and talc.

After touring the Mill, visitors can explore the rest of our 10-acre site. Several buildings remain from the adjacent Mulligan Quarry, including the Quarry Office, the Screenhouse, the Lime Kilns and the Tenant House. During the Quarry's operation from the 1840s to the mid-20th century, workers blasted rock from the limestone cliffs facing the South Branch of the Raritan River. Signs and exhibits inside and adjacent to these buildings help visitors learn about the Quarry's owners, workers, and scale of operation.

Several other buildings help visitor's picture life in Hunterdon County in the 18th and 19th century. Some of these structures were moved here from other locations, such as the Bunker Hill Schoolhouse and the Carriage Sheds. Others, such as the Log Cabin and the Spring House are modern constructions based on 18th century structures.

Public parking is available in lots on Lower Center Street, behind the Municipal Building on Leigh Street (off Route 173) and at the intersection of Halstead and Water Streets.

The Red Mill's first floor gift shop is wheelchair accessible and visitors may view a 15-minute video tour of the Mill. Gallery One and bathrooms in the Administration Building are accessible. Gravel paths line the 10-acre property.

Regular hours in 2014: April 1 to Sept. 26:

Tuesday to Saturday, 10am to 4pm and Sunday noon to 5pm

**Admission: \$8; seniors (65 and over), active duty military and veterans, \$6;
children (ages 6-12), \$5;**

Red Mill Museum Village members and children under 6 admitted free

www.theredmill.org

(908)735-4101

THE 1759 VOUGHT HOUSE

A Revolutionary War Loyalist Homestead

**34 Grayrock Road
Annandale**



New Jersey's Only Revolutionary War Loyalist Homestead

This unique stone farmhouse features rare architectural details and enables the telling of an important political story. The house combines German and English architectural elements. Its gable-end chimneys and center-hall plan are English, while its four rare 'wattle and daub' decorative ceilings are Germanic. During the American Revolution, its builder, Christoffel Vought and his son John opposed independence and led a group of loyalists from Hunterdon to join the British forces, for which the family farm was confiscated and sold. After the war the Voughts were exiled to Nova Scotia. They repatriated to the vicinity of Albany, New York, in the 1790s.

The Vought House non-profit purchased the house and land from the school board for the symbolic price of \$17.76 in March of 2012. This restored home will be the only site in New Jersey completing the narrative of the Revolution in New Jersey by bringing into the story the roughly one third of inhabitants who actively resisted independence. The restoration of this house as a genuine mid-18th Century artifact began in early 2014 with the deconstruction of newer wings and the installation of an authentic cedar shake roof. The next step will be to remove the white stucco and expose the stonework.

Public Archaeology and Open House

This summer's public archaeology program on the Vought house grounds will add more details to the history of the Vought, Stout, Hunt and later families who lived at the site. The dig will increase understanding all members of these households, which included enslaved Africans until at least 1798, and shed light on what life was like for all of those who lived there in the 1700 and early 1800s. Participants will uncover a buried foundation southeast of the house, not damaged by later construction, the base of a 12 x 14 foot structure interpreted as an "ancillary house," used by Germans to house older relatives. Christopher and Cornelia Vought may have lived here when he retired and their son John ran the farm. Open house visitors will see the archaeological excavation and displays on the progress and plans for this home's restoration. Our *Neighbors at War* booklets will be available for purchase.

1759VoughtHouse.org

Don Sherblom: 908 797-9900

THE LEBANON TOWNSHIP MUSEUM AT NEW HAMPTON

57 Musconetcong River Road

Lebanon



The Township of Lebanon Museum was constructed as a one-room limestone and stucco schoolhouse in 1825 on land donated by local resident Major Henry Dusenbery with the stipulation it would be used only for educational purposes. In the 1870's a second story was added to the original building and the building was extended to the size it is today. Through the years it was used as a grammar school, a Sunday school and a meeting house for various organizations. The old schoolhouse was neglected for many years until it was renovated and refurbished under the direction of the Township of Lebanon Historians. The Museum officially opened July 1982. In 1998 the Village of New Hampton was designated **New Hampton Historic District** by the state and federal National Register of Historic Places. The Museum is located in the only historically designated district in Lebanon Township.

Today the first floor of the Museum is a re-creation of a 19th century schoolroom, complete with original books, slate blackboards and a potbellied stove. Many groups of elementary students spent a day experiencing school in the 19th century using the old-fashioned desks.

During the school year, school and home schooled children and boy and girl scouts are invited to experience a day in an 1870's one-room school. During their day at the Museum the children study reading, 'riting, 'rithmetic and history. These special days are by appointment. Adult and children's craft classes are offered throughout the year.

The second floor is used as an exhibit and meeting area, where new exhibits are installed approximately every two months.

Annual exhibits include: Quilt and Coverlet Shows, Spring and Fall Art Shows, Photography Shows and Hooked Rug Shows. The permanent exhibits include collections of farm implements, old radios, original local scenes by artist Don Ross, holiday windows, Lenape artifacts, books, ledgers, an old post office and more.

General Daniel Morgan

On the museum grounds, view the plaque tribute to American Revolution General Daniel Morgan reputed to have been born in Hunterdon County. General Morgan was one of General George Washington's commanders who turned the War for Independence in the South with his triumph at the Battle of Cowpens, South Carolina in 1781. There are also plans for an 18th Century herb and flower garden.

**Regular Hours: Open Tuesday and Thursday 9:30-5pm; Saturday
1pm-5pm Admission is Free**

**Please note: We are located in Lebanon Township, not Lebanon Borough
908-537-6464**

THE SOLITUDE HERITAGE MUSEUM

Union Forge Heritage Association
117 Van Syckel's Road, Union Township



The Union Iron Works and Union Farm West

The subject Turner House and associated properties and outbuildings were once the property of the 1742 Union Iron Works. These works were owned by prominent business men and Philadelphia investors William Allen and Joseph Turner. This successful enterprise encompassed over ten thousand acres to include the Union Forge in High Bridge and the Union Furnace at Spruce Run in Union Township. These works produced farm implements, horse shoes, and other tools needed in colonial times. Most notably the works produced cannon balls for the Continental Army during the Revolutionary War. The Turner House, along with a hand full of structures, still remains in the vicinity that was associated with the Iron Works. All of these surviving structures now exist on the northern rim of today's Spruce Run Reservoir that would become part of Joseph Turners Union Farm in the area that would be referred to as the Van Syckel Corner/ Norton district. In about 1742, Joseph Turners' Union Farm was constructed that includes today's Jockey Hollow farm, and the subject Turner House. Further research will reveal if the Turner House pre-exists the Union Farm main home, or was constructed as a tenant house to serve the main farmstead. With the demise of the Iron Industry in 1784, the properties changed hands to Benjamin Chew and his children, several generations of the Carhart family and ultimately to the State of NJ in 1967. Since the 1970's, the property has been on the National Register of Historic Places.

History of the 1760 Joseph Turner House

The Turner House started life as a simple two story, four room colonial home constructed in circa 1760. This small structure totaled four rooms and constructed of stone walls and heavy hand hewn timber floors and roof. This home was likely constructed by the Union Iron Works as a tenant home for the adjacent Union Farm. Owners of the home in this period of time included William Allen and Joseph Turner (owners of the Iron Works), and Supreme Court Justice Benjamin Chew. After the Iron Works ceased operation in 1781, Joseph Turner became owner of the Union Farm parcel that included the subject Turner House. Over the years, Turner House changed hands several times and was expanded in the 1830's with a Greek Revival addition under the ownership of Charles Carhart. A grand parlor and foyer on the first floor and three bedrooms upstairs created an impressive farm tenant house. From 1830 to present day, the turner House endured changes and alterations, but impressively has survived essentially intact and retains many of its interior features including wide-plank floors, trim work, chair rails, mantels and fireplaces. With the construction of Spruce Run Reservoir in 1961, the house came under ownership of the State of New Jersey. Upon the Union Forge Heritage Association entering into the property, the house was left vacant for many years, in need of much repair and was facing possible demolition.

Solitude Heritage Museum

From 2001-2012, the Union Forge Heritage Association operated and managed the Solitude House Museum at the Solitude House in High Bridge. During that time, the UFHA amassed a large collection of artifacts from the Taylor Wharton Iron and Steel Company, the Union Iron Works, and other artifacts of local interest. Over the years, the UFHA expanded our mission outside of the museum to other areas of historic preservation that includes the restoration and adaptive re-use of historic structures, and the promotion of local history through instruction. In 2012, the UFHA relocated our base of operation and museum to our new facility in Union Township. Our new home at the 1760 Joseph Turner House provides an extraordinary opportunity for our group of dedicated volunteers to continue our work in a historically appropriate setting to our mission and values. Restorations of the home are underway, and future restorations of our 1830's barn to be used as the UFHA Environmental and Cultural Center are in the planning stages.

Regular hours: Open Sundays 2-4pm May-November starting in 2015

Entrance fee of \$7.00/person will be waived for July 13th and 20th only

UFHANJ@hotmail.com

THE HISTORIC SOLITUDE HOUSE

7 River Road
High Bridge



Solitude, oil on canvas, by J.Stacy Rogers

In 1742, William Allen and Joseph Turner, wealthy Philadelphia merchants and politicians, purchased 10,000 acres near present-day High Bridge upon which they established the Union Iron Works. Solitude House was part of that purchase and had been built circa 1725. Robert Taylor, the company bookkeeper, arrived from Ireland in 1758 and leased a room in this house with the Superintendent of the Iron Works, Colonel Hackett (for which Hackettstown was named). Taylor became the company manager in 1775 and later purchased the house and surrounding iron mines in 1803.

During the Revolutionary War, Solitude House became a prison for two very important political prisoners who were removed from Philadelphia for fear that they could aid British Major William Howe. Robert Taylor was given the responsibility of holding John Penn, the last colonial Governor of Pennsylvania (son-in-law of Wm. Allen and grandson of Wm. Penn) and his Chief Justice, Benjamin Chew (husband of Joseph Turner's niece) in the original portion of the homestead from September 1777 to June 1778. Penn and Chew signed parole papers stating that they would report to the Iron Works and remain there or within 6 miles thereof until released by the Board of War. During this time, it was John Penn who named the house "Solitude" because the hills were so quiet.

The house doubled in size and underwent significant expansion and renovations in the 1850-60s during an upsurge of the family's fortune in the Industrial Revolution. It was this renovation which gives the home its present appearance. Five generations of the Taylor family resided at Solitude until 1914.

The Borough of High Bridge purchased Solitude House in 2002 and completed a formal Preservation Plan in 2012 with grant monies the Borough secured through the New Jersey Historic Trust. The House is currently in the process of becoming part of the National Registry of Historic Places, qualifying under several overlapping criteria.

The Borough of High Bridge recently invested \$3.6 million to restore the Historic Dam and Spillway on the site and is now turning its resources toward Solitude House and the Annex. Historic Solitude House is currently unoccupied as a residence. The High Bridge Historical Society and The High Bridge Borough Cultural and Heritage Committee, along with support from many community volunteers, are working hard to keep the building maintained and as open to the public as possible. The site is being developed as a Community Cultural Center and Public Space, as well as a venue for the public exhibition of specially curated collections.

Regular hours: At present, there are no set hours of operation

Visit us on Facebook: Historic Solitude House

908-638-6455 (Borough Hall)

CALIFON HISTORICAL SOCIETY STATION MUSEUM

**25 Academy Street
Califon**



The train started running to Califon in 1875. Though the Central Railroad of New Jersey built both a wooden freight station and passenger station, the citizenry of Califon replaced it at their own expense with a stone structure.

In 1970, the Califon Historical Society made the stone railway station its home and created a town museum. It is located on the corner of Academy St and Railroad Road, next to the Columbia bicycle and walking trail. The museum is open on the first and third Sunday of each month, May through September. It is also open for special occasions (see the Califon Historical Society website for more details).

Regular hours: First and third Sunday of each month, 2pm to 4pm, May through September

Entrance is free of charge

www.califonhistoricsociety.org

TEWKSBURY HISTORICAL SOCIETY

60 Water Street
Tewksbury Township



History of the Tewksbury Historical Society

The Tewksbury Historical Society was founded in 1989 for the purposes of preserving and disseminating the history of the Township of Tewksbury. The Society is incorporated as a IRS 501 (c) (3) non-profit and registered with the State of New Jersey.

The Society has a membership of over 175 families, several of whom are descendants from the original settlers of Tewksbury. The Society is governed by an 11 member Executive Board and holds 4 meetings per year on Sunday afternoons/evening on topics of local history. The Society's Headquarters are located at 60 Water Street in Mountainville in the original one-room Mountainville schoolhouse.

The Society is focused on collecting documents, records, photos, artifacts and the like that document Tewksbury's rich history, including things from 1800s store ledgers and 1900s scrap books, tax records, and band instruments to baseball uniforms. An Oral History program captures longtime residents on video to record their thoughts and memories of Tewksbury of yesteryear.

Current Museum Displays

Rockaway Valley Railroad Memorabilia: photos, artifacts and implements from the now defunct Rockabye Baby Railroad
Tewksbury Winery: see vintage wines from the 1980s produced by one of Hunterdon County's 1st wineries

2014 CALENDAR OF EVENTS

Sunday, July 20	10 am to 4 pm	Tewksbury Barn Tour*
Sunday, August 17	10 am to 4 pm	Tour Tewksbury by Auto – self-guided tour*
Saturday, August 30	8 am to 3 pm	Tewksbury Flea Market, Route 517, Oldwick*
Sunday, September 14	1 pm	Lecture on History of Pottersville followed by a guided Walking Tour of Pottersville
Tuesday, September 30, Wednesday October 1	6 pm to 8 pm	Tewksbury Art Showing Preview Zion Lutheran Christian Ed Bld., Oldwick
Thru Sunday October 5	Various	Tewksbury Art Show & Sale
Saturday, November 8	TDB	Tavern Lecture, Tour & Lunch – Tewksbury Inn, Oldwick*
Sunday, November 9	5 pm	Covered Dish Supper & Program
Saturday, December 6	10 am to 5 pm	Tewksbury Christmas Antique Show
Sunday, December 7	11 am to 4 pm	Tewksbury Christmas Antique Show

* denotes admission fee or program fee

Regular Hours: Select Saturdays from 9am to Noon and by appointment

Access to museum is always free

www.tewksburyhistory.net * tewksburyhistory@earthlink.net

908- 832-6734

The Museum is ADA Accessible

THE READINGTON MUSEUMS

114 Dreahook Road

Stanton

(for GPS, use Lebanon for the town)



The Bouman-Stickney Farmstead is named for its former owners. Dutch homesteader, Thomas Bouman, originally purchased the property sometime before 1740. The house was built in 1741 and stayed in the Bouman family until about 1855. In 1935, Broadway playwright and producer Howard Lindsay purchased the house and surrounding property as a gift for his wife, Broadway and movie actress Dorothy Stickney. Ms. Stickney and Mr. Lindsay used the house as a weekend and vacation retreat until Mr. Lindsay's death in 1968. The house and surrounding 68 acres were purchased by Readington Township from Ms. Stickney in 1997.

The house is a magnificent stone bank house with Dutch and German architectural influences. The stone for the facade, as well as the timbers for the frame were harvested from nearby Cushetunk Mountain. Also on the farmstead is a double corn crib wagon house built in the 1820s which sits in the northeast corner of the property. Donated to us by Merck, it was originally located on a farm which is now part of the Merck Property. Though it was originally used to store wagons and grain, today it holds the Museums' collection of early farm tools.

The Wade-Wyckoff Barn Located on the Farmstead is an example of a relatively rare farming structure - a New World Dutch Barn. The original barn sat on the Wade Farm property and was moved to the Bouman-Stickney property in 2000. The barn's skeleton was taken apart piece by piece and carefully labeled to facilitate reconstruction at the Farmstead. The cladding is new, but the supporting structure is original.

Other sites that make up the Readington Museums include the Eversole-Hall House located at 511 County Road 523 and the Cold Brook School located on Potterstown Road in Readington Township. For more information about these buildings please see the web site below.

Regular hours: open for special events and by appointment

There is no entrance fee, please see web site for programs, ADA acceptable

www.readingtontwp.org/ReadingtonMuseums/index.html

908-236-2327

HUNTERDON COUNTY TRICENTENNIAL CELEBRATION



300 YEARS OF HISTORY

HUNTERDON MUSEUM TOUR 2014

Carol Hoffmann, Project Manager
Eileen Morales
Gayle Maher

Program: Carol Hoffmann
Maps: Patricia Leidner, Hunterdon County Geographic Information Systems
Printing: Hunterdon County Division of Central Printing and Mail
Painting: Chrysler Museum of Art, Norfolk Virginia

The Hunterdon County Board of Chosen Freeholders

John W. King, Deputy Director
Suzanne Lagay, Deputy Director
J. Matthew Holt, Freeholder
John G. Lanza, Freeholder
Robert G. Walton, Freeholder

The Hunterdon County Tricentennial Board of Directors

Marcia A. Karrow, Chair - Catherine McVicker, Vice Chair
Frank J. Fuzo, Treasurer - Mary H. Melfi, Secretary - Gaetano De Sapio, Esq.
J. Matthew Holt - Gayle Maher - Christopher Phelan - Cynthia J. Yard

www.hunterdon300th.org