

A full-day seminar with four nationally-known speakers will be held at the Baptistown Baptist Church, 1040 Route 519, Baptistown NJ on Saturday, April 12 from 9:30am to 3:30pm.

The speakers and their topics are:

Sue Reich (Washington Depot, CT) on “Quiltings, Frolicks and Bees: 100 Years of Signature Quilts”;

Karen Dever (Moorestown, NJ) on “My Garden of Quilts - Botanical Textiles”;

Newbie Richardson (Alexandria, VA) on “Quilts in Context”; and

Dana Balsamo (Princeton, NJ) on "Evaluating Your Quilts...is it a Treasure?" Attendees are invited to bring their own antique quilts for evaluation.

A seminar fee of \$50.00 includes a continental breakfast and lunch. Register by sending a check for the full amount made out to the

Hunterdon Tri-Centennial Committee
to

*Judy Grow – Seminar,
76 Old Clinton Road,
Flemington NJ 08822.*

Space will be limited to the first 50 to register. The quilt exhibition will remain open that day until 6:30 pm to allow attendance at both events.

Besides private collectors and quilters, quilts in the exhibition will be on loan from

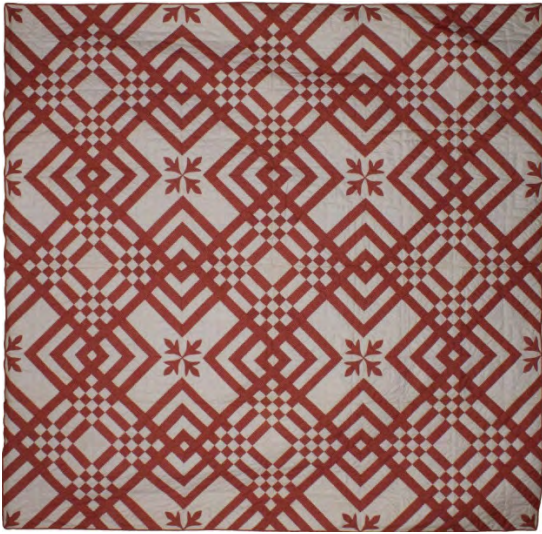
- **The Red Mill Museum Village**
56 Main Street, Clinton NJ
908- 735-4101
<http://www.theredmill.org/>
- **Hunterdon County Historical Society**, 114 Main Street, Flemington NJ 08822
908-782-1091
<http://hunterdonhistory.org/>
- **Astle-Alpaugh Family Foundation**
in Annandale. P.O. Box 182,
Annandale, NJ 08801
www.taaffshowcase.org
- **Readington Historical Society** in Stanton, at the Bouman Stickney Farmhouse. 114 Dreahook Road Stanton, NJ 08885. 908-236-2327
[readingtonmuseums@gmail.com/](mailto:readingtonmuseums@gmail.com)
- **Lambertville Historical Society** in Lambertville at the Marshall House Museum. 62 Bridge Street, Lambertville NJ 08530.
609-397-0770
lambertvillehistoricalsociety.org/
- **Lebanon Township Museum**, 57 Musconetcong River Road, Hampton NJ 908-537-6464
lebanontownship.net/services/museum.aspx

For more information, email
judy.grow@comcast.net
with
Common Threads Quilt Exhibition
in the subject line.



*Common Threads:
Quilting Traditions in
Hunterdon County, NJ*

**Historical and
Contemporary Quilts
In a Major Exhibition in
Flemington NJ
April 5-April 13
2014**



**Historical and Contemporary Quilts in
Major Exhibition in Flemington NJ
Saturday, April 5 to Sunday, April 13.**

In the continuing celebration of Hunterdon County NJ's 300th Anniversary, a major exhibition of quilts will be exhibited in the Assembly Room of County Building One, Route 12 in Flemington for the nine days from **Saturday, April 5 to Sunday, April 13**. Hours are from 10am to 4pm each day with extended hours to 6:30 pm on Tuesday April 8 and Saturday April 12. There is adequate parking and admission is free.

The Exhibition, *Common Threads: Quilting Traditions in Hunterdon County, NJ* is made possible in large part by a grant from the Quilter's Guild of Dallas TX. Judy Grow, Curator of Textiles at the Hunterdon County Historic Society and Flemington resident, is Curator of the exhibition.

Experienced quilters will serve as docents for the exhibition.

Forty quilts will be exhibited, all with a Hunterdon County connection. Most will be historic quilts; many are signature quilts associated with churches and families of note, and many date from the 1840s. The earliest quilt in the exhibition is signed and dated 1832. Three historic societies, two museums, a foundation and private collectors are lending quilts. Two Hunterdon quilts are coming home from Utah and Indiana.



The art and craft of quilting has probably never had as many active participants as it has today when it is a multi-billion-dollar industry. Hunterdon County is home to two major quilt guilds and so four contemporary quilts will be included in the exhibition to show the continuity of endeavor and design.

A 60-page four-color catalog of the exhibition will be for sale for \$12.00.

The photographic image of a number of quilts in the exhibition will be available to special order as a 68" x 72" printed shower curtain. A sample of one of these will be on view. All profits from the shower curtain purchases will go to the lending institutions.

All photography was donated by Bob Heil at Black Lab Studio & Imaging, 24A Main Street in Flemington, NJ.

Curator Judy Grow will give a free lecture on the History of Quilts on Tuesday, April 8 at the Library in the Route 12 County Complex at 7 pm. The quilt exhibition will remain open that day until 6:30 pm to allow attendance at both events.

